

Accessories Guide

for Vehicle Mounted Computers



Content Overview

1. VMT FAMILIES OVERVIEW	5
2. MOUNTING AND BRACKETS	6
2.1. Availability Matrix.....	6
2.2. RAM-Mount Set short Arm 130 mm	8
2.3. RAM-Mount Set long Arm 215 mm.....	9
2.4. RAM-Mount Set double Arm 150 mm.....	10
2.5. RAM-Mount Set double Arm 150 mm Pipe Fix.....	11
2.6. Mounting bracket 15 degree fixed for DLT-V72, DLT-V83	12
2.7. V73 Adapter kit to DL-MTKT009 Mounting bracket.....	13
2.8. V73 Mounting bracket 15 grade fixed.....	14
2.9. Mounting kit wall adapter I-50.....	15
2.10. Mounting Kit Double Plate	16
2.11. Mounting bracket 15d. fixed MTC6 XMT5/10.....	17
3. KEYBOARD MOUNTINGS	18
3.1. Availability Matrix.....	18
3.2. Mounting Kit SMALL/24 Keyboard Front DLT-V8310/12 and DLT-V7210/12.....	19
3.3. Mounting Kit SMALL/24 Keyboard Front DLT-V8315.....	20
3.4 Mounting kit BOTTOM for 21key and 65key keyboard DLT-V73	21
3.5 Mounting kit RIGHT for 21key keyboard DLT-V73.....	22
3.6 Mounting kit LEFT for 21key keyboard DLT-V73	23

4. SCANNER MOUNTINGS	24
4.1. Availability Matrix	24
4.2. Scanner Mounting, LEFT, LS34xx, LS35xx.....	26
4.3. Scanner Mounting, RIGHT, LS34xx, LS35xx	27
4.4. Scanner Mounting, RIGHT, DS36xx.....	29
4.5. Scanner Mounting, 12" RIGHT LI3678	30
4.6. Scanner Mounting, 10"RIGHT, DS36xx.....	31
4.7. Scanner Mounting, 12"RIGHT, DS36xx.....	32
4.8. Scanner Mounting, 10" LEFT, LS34xx, LS35xx.....	33
4.9. Scanner Mounting, 12"LEFT, LS34xx, LS35xx.....	34
4.10. Scanner Mounting, 10"RIGHT, LS34xx, LS35xx	35
4.11. Scanner Mounting, 12" RIGHT, LS34xx, LS35xx	36
5 TOUCH STYLUS.....	37
5.1. Availability Matrix	37
5.2. Stylus with mounting regular for resistive touch	38
5.3. Stylus with mounting regular for PCT	39
5.4. Stylus with mounting large resistive.....	40
5.5. Stylus with mounting large for PCT	41
5.6. V73 Stylus w. mounting regular resist.	42
5.7. V73 Stylus with mounting regular PCT	43

6	REMOTE ANTENNAS	44
6.1.	Availability Matrix.....	45
6.2.	WLAN kit external Antenna 4 dBi for DLT-V83.....	46
6.3.	WLAN kit external Antenna 4 dBi	47
6.4.	Mounting kit WLAN WWAN GPS Antenna remote EU.....	48
6.5.	Mounting kit WLAN WWAN GPS Antenna remote EU for DLT-V72 ...	49
6.6.	WWAN 4G antenna for DLT-V6210FL	50
6.7.	External GPS receiver.....	51
6.8.	WWAN GPS Antenna remote.....	52
7	KEYBOARD	53
7.1.	Availability Matrix.....	53
7.2.	Keyboard 65 keys alphanumeric	54
7.3.	Keyboard 21 keys numeric	55
8	ADDITIONAL FEATURES	56
8.1.	Availability Matrix.....	56
8.2.	Digital Smart Motion Sensor- ScreenBlanking	57
9	POWER SUPPLIES & CORDS.....	58
9.1.	Availability Matrix.....	58
9.2.	Power Supply 110/240VAC, 24V output, 90W	59
9.3.	Power Cords for external adapter.....	60
10	AC POWER CABLES	61
10.1.	Availability Matrix.....	61
10.2.	AC Power Cables (for V8315 AC type)	62
10.3.	AC Power Cables (110/230VAC RA 2.5m ErP)	62

11	DC POWER CABLES	63
11.1.	Availability Matrix	63
11.2.	DC Power Cables	64
11.3.	Quick Connect Cables	65
12	USB RECOVERY STICK	66
12.1.	Availability Matrix	66
12.2.	USB recovery stick for DLT-Vxx legacy.....	67
12.3.	USB recovery stick for DLT-Vxx UEFI.....	68
12	COPYRIGHT & DISCLAIMER	69

1. VMT FAMILIES OVERVIEW



DLT-V73 & -V73A Series



DLT-V83 Series







DLT-V72 Series



DLT-V6210 Facelift

2. MOUNTING AND BRACKETS

2.1. Availability Matrix

Availability Matrix Mounting and Brackets											
P/N	Description	DLT-V7310	DLT-V7312/P+	DLT-V8310	DLT-V8312	DLT-V8315	DLT-V7210	DLT-V7212	DLT-V7210 K, KD	DLT-V7212/15 P+	DLT-V6210FL
DL-MTRM004	RAM-Mount Set short Arm 130 mm	✓	✓	✓	✓	✓	✓	✓	✓	✓	✓
DL-MTRM003	RAM-Mount Set long Arm 215 mm	✓	✓	✓	✓	✓	✓	✓	✓	✓	✓
DL-MTRM002	RAM-Mount Set double Arm 150 mm	✓	✓	✓	✓	-	✓	✓	✓	✓	✓
DL-MTRM001	RAM-Mount Set double Arm 150 mm Pipe Fix	✓	✓	✓	✓	-	✓	✓	✓	✓	✓
DL-MTKT009	Mounting bracket 15 degree fixed for DLT-V72, DLT-V83	-	-	✓	✓	✓	✓	✓	✓	✓	-
DL-MTKT012	V73 Adapter kit to DL-MTKT009 Mounting bracket	✓	✓	-	-	-	-	-	-	-	-
DL-MTKT013	V73 Mounting bracket 15 grade fixed	✓	✓	-	-	-	-	-	-	-	-
DL-MTKT007	Mounting kit wall adapter, I-50	✓	✓	✓	✓	✓	✓	✓	✓	✓	✓
DL-MTRM013	Mounting kit double plate	✓	✓	✓	✓	✓	✓	✓	✓	✓	✓
DL-MTKT004	Mounting bracket 15d. fixed MTC6 XMT5/10	-	-	-	-	-	-	-	-	-	✓

Choosing the correct mount

This catalog section shows the mounting solutions for the Advantech SLoT Vehicle Mounted Computers and accessories. It specifies whether the listed mounting solutions are suitable for mobile use, restricted mobile use or stationary use. These uses correspond to the operation classes 5M3, 5M2 and 5M1 for mechanical environmental conditions. The following standards offer a practical means of reference:

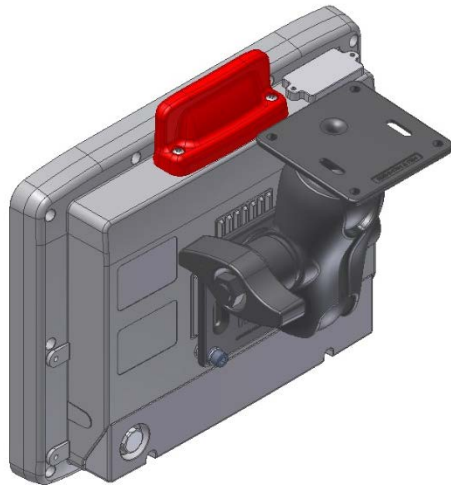
- DIN EN 60721-3-5: 1998 classification of environmental conditions, part 3, section 5: Use on and in ground vehicles
- Military standard MIL-STD 810F: 2000

5M3: Mobile use	5M2: Restricted mobile use	5M1: Stationary use
Examples: Vehicles without shock absorption; Forklifts; unbalanced machines; combustion engine of a construction machine	Examples: Vehicles with shock absorption; driver’s cab in a tractor; standing machines; machine tools	Examples: Vehicles with very good shock absorption; car dashboard; immobile mounting surfaces; desk or wall
Operational environments with high energy vibrations and high energy shocks as well as rough handling/transport compliant with:	Operational environments with low energy vibrations and high energy shocks as well as careful handling/transport compliant with:	Operational environments with low energy vibrations and medium energy shocks as well as very careful handling/transport compliant with:
Operation class 5M3 according to DIN EN 60721-3-5 or equivalent Category US Highway Truck according to MIL-STD 810F	Operation class 5M2 according to DIN EN 60721-3-5 or equivalent Category US Highway Truck according to MIL-STD 810F	Operation class 5M1 according to DIN EN 60721-3-5.

2.2. RAM-Mount Set short Arm 130 mm

P/N: DL-MTRM004	DLT- V7310	DLT- V7312/P+	DLT- V8310	DLT- V8312	DLT- V8315	DLT- V7210	DLT- V7212	DLT- V7210 K, KD	DLT- V7212/15 P+	DLT- V6210FL
Availability	✓	✓	✓	✓	✓	✓	✓	✓	✓	✓
Operation class	5M3	5M3	5M3	5M3	5M1	5M3	5M3	5M3	5M3	5M3

Example: DLT-V7210

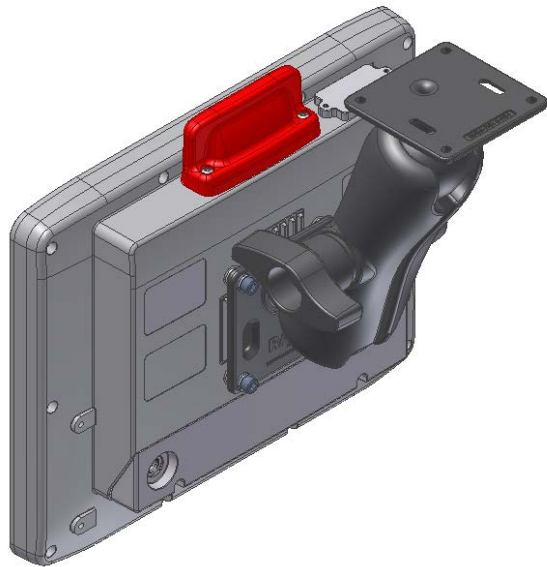


Technical data	
Application	For raw industrial environment and vehicles
Scope of delivery	4 x Washer ISO 8738 (DIN 1440)-A6-A2 4 x Washer spring A6 DIN128 FSt galvan 4 x Screw Cyl.int.hex DIN912 M6x16 A2 TufLok 2 x RAM-D-2461U Fixing plate RAM-Mount VESA w.ball 2.25" 1 x RAM-D-201U-C conn.arm VESA 130mm for ball 2.25"

2.3. RAM-Mount Set long Arm 215 mm

P/N: DL-MTRM003	DLT- V7310	DLT- V7312/P+	DLT- V8310	DLT- V8312	DLT- V8315	DLT- V7210	DLT- V7212	DLT- V7210 K, KD	DLT- V7212/15 P+	DLT- V6210FL
Availability	✓	✓	✓	✓	✓	✓	✓	✓	✓	✓
Operation class	5M3	5M3	5M3	5M3	5M1	5M3	5M3	5M3	5M3	5M3

Example: DLT-V7212

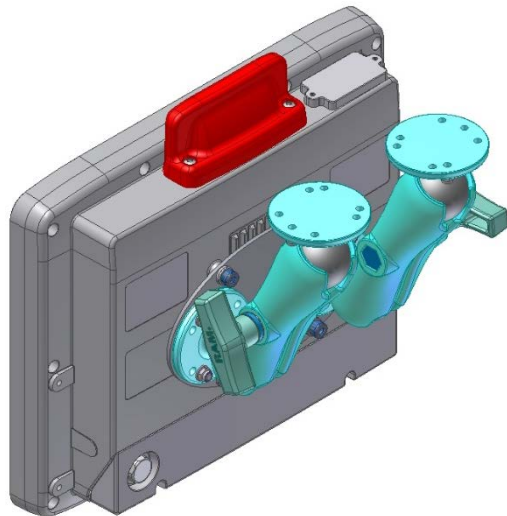


Technical data	
Application	For raw industrial environment and vehicles
Scope of delivery	4 x Washer ISO 8738 (DIN 1440)-A6-A2 4 x Screw Cyl.int.hex DIN912 M6x16 A2 TufLok 4 x Washer spring A6 DIN128 FSt galvan 2 x RAM-D-2461U Fixing plate RAM-Mount VESA w.ball 2.25" 1 x RAM-D-201U RAM conn.arm VESA 215mm for ball 2.25"

2.4. RAM-Mount Set double Arm 150 mm

P/N	DLT-V7310	DLT-V7312/P+	DLT-V8310	DLT-V8312	DLT-V8315	DLT-V7210	DLT-V7212	DLT-V7210 K, KD	DLT-V7212/15 P+	DLT-V6210FL
DL-MTRM002										
Availability	✓	✓	✓	✓	-	✓	✓	✓	✓	✓
Operation class	5M3	5M3	5M3	5M3	-	5M3	5M3	5M3	5M3	5M3

Example: DLT-V7210

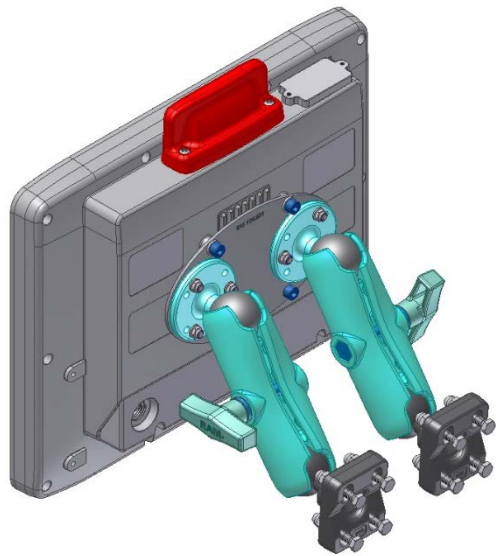


Technical data	
Application	For raw industrial environment and vehicles
Scope of delivery	<ul style="list-style-type: none"> 4 x Washer ISO 8738 (DIN 1440)-A6-A2 1 x Nut M5 Lock-nut DIN 985 FE/ZN B=8 H=5 1 x Washer A 5.3 DIN 125 FE/ZN FORM A for M5 4 x Washer A6.4 DIN125 FE/ZN FORM A 4 x Washer spring A6 DIN128 FSt galvan 4 x Screw Cyl.int.hex DIN912 M6x10 A2 TufLok 4 x Screw Cyl.int.hex DIN912 M6x12 A2 TufLok 1 x Adapter holder RAM dual (Oval shape) 2 x RAM-201 connecting arm VESA approx. 145mm 4 x RAM-202U 2-1/2" DIA. BASE

2.5. RAM-Mount Set double Arm 150 mm Pipe Fix

P/N	DLT-V7310	DLT-V7312/P+	DLT-V8310	DLT-V8312	DLT-V8315	DLT-V7210	DLT-V7212	DLT-V7210 K, KD	DLT-V7212/15 P+	DLT-V6210FL
DL-MTRM001										
Availability	✓	✓	✓	✓	-	✓	✓	✓	✓	✓
Operation class	5M3	5M3	5M3	5M3	-	5M3	5M3	5M3	5M3	5M3

Example: DLT-V7212

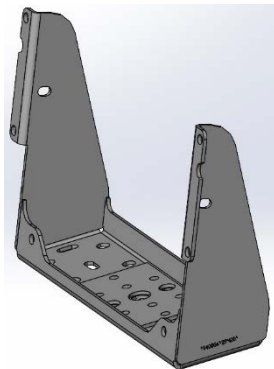
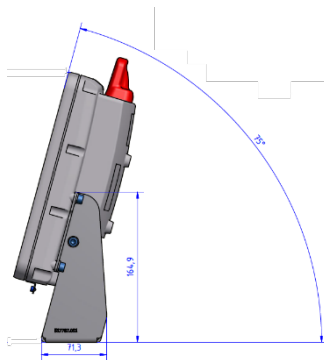


Technical data	
Application	For raw industrial environment and vehicles For assembling the terminal to a tube
Scope of delivery	<ul style="list-style-type: none"> 3 x Washer ISO 8738 (DIN 1440)-A6-A2 6 x Nut M5 Lock-nut DIN 985 FE/ZN B=8 H=5 8 x Nut domed cap M6 DIN1587 galvan B=10 H=9.5 6 x Washer A 5.3 DIN 125 FE/ZN FORM A for M5 2 x Washer A6.4 DIN125 FE/ZN FORM A 8 x Washer A6.4 DIN 9021 large Steel galvan 8 x Washer spring A6 DIN128 FSt galvan 3 x Screw Cyl.int.hex DIN912 M6x10 A2 TufLok 4 x Screw Cyl.int.hex DIN912 M6x12 A2 TufLok 8 x Screw M6x30 DIN933 FE/ZN hex. 1 x Adapter holder RAM dual (Oval shape) 2 x RAM-201 connecting arm VESA approx. 145mm 2 x RAM-202U 2-1/2" DIA. BASE 2 x Pipe fixing with ball 1.5" pipe 1.25"

2.6. Mounting bracket 15 degree fixed for DLT-V72, DLT-V83

P/N: DL-MTKT009	DLT-V7310	DLT-V7312/P+	DLT-V8310	DLT-V8312	DLT-V8315	DLT-V7210	DLT-V7212	DLT-V7210 K, KD	DLT-V7212/15 P+	DLT-V6210FL
Availability	✓ + DL-MTKT012	✓ + DL-MTKT012	✓	✓	✓	✓	✓	✓	✓	-
Operation class	5M2	5M2	5M3	5M3	5M2	5M3	5M3	5M3	5M3	-

Example: DLT-V8310

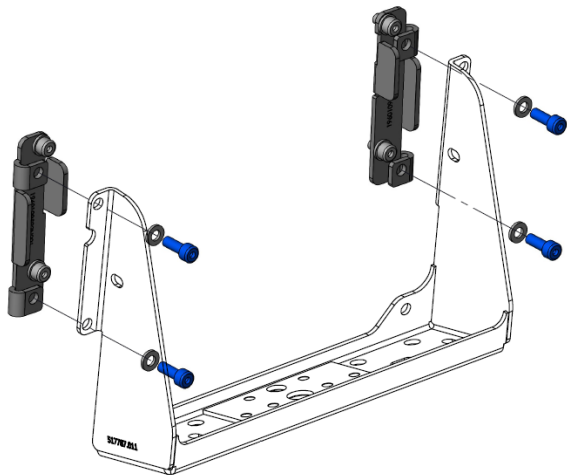


Technical data:	
Application	For raw industrial environment and vehicles
Material	Steel St 37-2 powder coated
Scope of delivery	6 x Washer A6.4 DIN125 FE/ZN FORM A D12 d6.4 t1.6 6 x Screw Cyl.int.hex DIN912 M6x12 A2 TufLok 1 x Mounting bracket mobile 15 grade fixed DLT-V83

2.7. V73 Adapter kit to DL-MTKT009 Mounting bracket

P/N: DL-MTKT012	DLT- V7310	DLT- V7312/P+	DLT- V8310	DLT- V8312	DLT- V8315	DLT- V7210	DLT- V7212	DLT- V7210 K, KD	DLT- V7212/15 P+	DLT- V6210FL
Availability	✓	✓	-	-	-	-	-	-	-	-
Operation class	5M2	5M2	-	-	-	-	-	-	-	-

Example: DLT-V7310

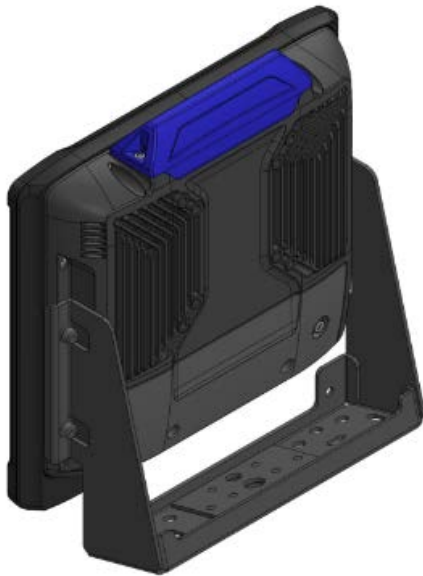


Technical data:	
Application	For raw industrial environment and vehicles
Material	Steel St 37-2 powder coated
Scope of delivery	<p>8 x Washer A6.4 DIN125 FE/ZN FORM A D12 d6.4 t1.6</p> <p>4 x Screw Cyl.int.hex DIN912 M6x10 A2 TufLok</p> <p>4 x Screw Cyl.int.hex DIN912 M6x16 A2 TufLok</p> <p>1 x Mounting Kit Adapter R V73 Powder Black C SGCC</p> <p>1 x Mounting Kit Adapter L V73 Powder Black C SGCC</p> <p>1 x Blank Label 47x25mm for MIC-3001 A1</p>

2.8. V73 Mounting bracket 15 grade fixed

P/N: DL-MTKT013	DLT- V7310	DLT- V7312/P+	DLT- V8310	DLT- V8312	DLT- V8315	DLT- V7210	DLT- V7212	DLT- V7210 K, KD	DLT- V7212/15 P+	DLT- V6210FL
Availability	✓	✓	-	-	-	-	-	-	-	-
Operation class	5M3	5M3	-	-	-	-	-	-	-	-

Example: DLT-V7310P

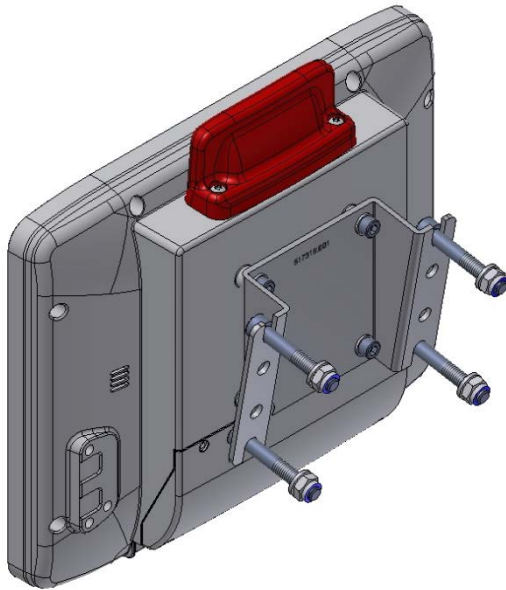


Technical data:	
Application	For raw industrial environment and vehicles
Material	Steel St 37-2 powder coated
Scope of delivery	4 x Washer A6.4 DIN125 FE/ZN FORM A D12 d6.4 t1.6 4 x Screw Cyl.int.hex DIN912 M6x10 A2 TufLok 1 x Mounting Bracket for V73 Powder Black C

2.9. Mounting kit wall adapter I-50

P/N	DLT-V7310	DLT-V7312/P+	DLT-V8310	DLT-V8312	DLT-V8315	DLT-V7210	DLT-V7212	DLT-V7210 K, KD	DLT-V7212/15 P+	DLT-V6210FL
DL-MTKT007										
Availability	-	-	✓	✓	✓	✓	✓	✓	✓	✓
Operation class	5M1	5M1	5M1	5M1	5M1	5M1	5M1	5M1	5M1	5M1

Example: DLT-V6210FL

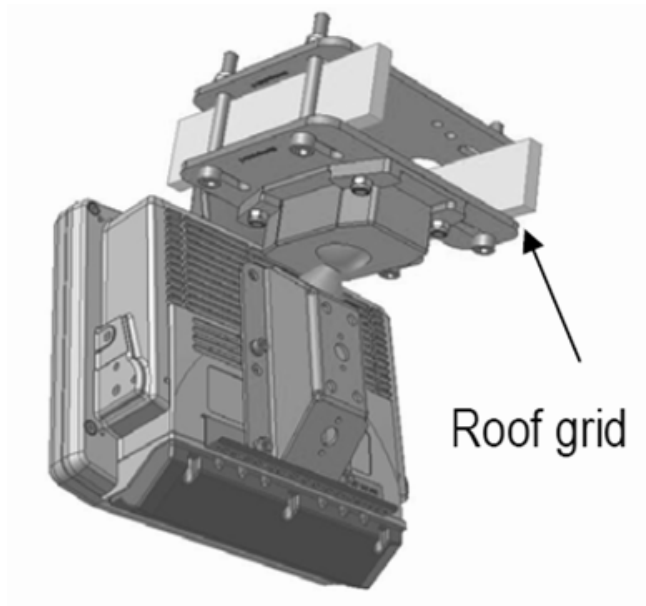


Technical data	
Application	<p>For raw industrial environment and vehicles</p> <p>For a stationary mounting.</p> <p>For wall thickness from 27 mm to 37 mm</p> <p>Wall bracket 10 grade inclined</p>
Scope of delivery	<p>4 x Washer spring A6 DIN128 FSt galvan</p> <p>4 x Nut M8 Lock-nut DIN 985 FE/ZN B=13 H=8</p> <p>4 x Washer ISO 8738 (DIN 1440)-A8-A2</p> <p>4 x Screw Cyl.int.hex DIN912 M6x10 A2 TufLok</p> <p>4 x Screw Cylinder int.hex M8x50 V2A ISO4762</p> <p>1 x Wall bracket 10 grade for forklift-holder</p>

2.10.Mounting Kit Double Plate

P/N	DLT-V7310	DLT-V7312/P+	DLT-V8310	DLT-V8312	DLT-V8315	DLT-V7210	DLT-V7212	DLT-V7210 K, KD	DLT-V7212/15 P+	DLT-V6210FL
DL-MTRM013										
Availability	✓	✓	✓	✓	✓	✓	✓	✓	✓	✓
Operation class	5M3	5M3	5M3	5M3	5M3	5M3	5M3	5M3	5M3	5M3

Example: Double plate with forklift roof grid

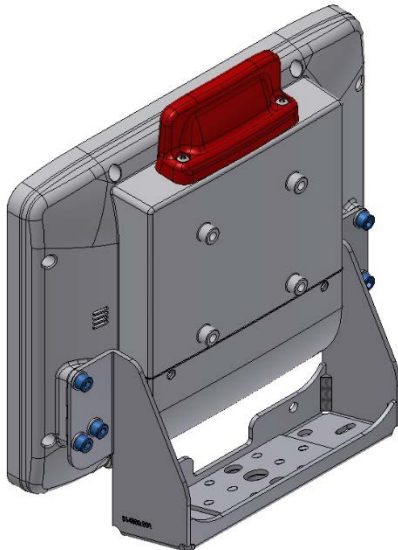


Technical data	
Application	For raw industrial environment and vehicles
Material	Steel St 37-2 powder coated
Scope of delivery	4 x Nut M10 Lock-nut DIN 985 FE/ZN 4 x Screw Cylinder int.hex M10x70V2A ISO4762 4 x Screw Cylinder int.hex M10x80V2A ISO4762 2 x Mounting plate with drilled hole Vesa coated

2.11. Mounting bracket 15d. fixed MTC6 XMT5/10

P/N: DL-MTKT004	DLT- V7310	DLT- V7312/P+	DLT- V8310	DLT- V8312	DLT- V8315	DLT- V7210	DLT- V7212	DLT- V7210 K, KD	DLT- V7212/15 P+	DLT- V6210FL
Availability	-	-	-	-	-	-	-	-	-	✓
Operation class	-	-	-	-	-	-	-	-	-	5M1

Example: DLT-V6210FL



Technical data:	
Application	For raw industrial environment and vehicles
Material	Steel St 37-2 powder coated
Scope of delivery	1 x Mounting bracket 15 grade fixed 6 x Washer ISO 8738 (DIN 1440)-A6-A2 6 x Screw Cyl.int.hex DIN912 M6x12 A2 TufLok

3.KEYBOARD MOUNTINGS

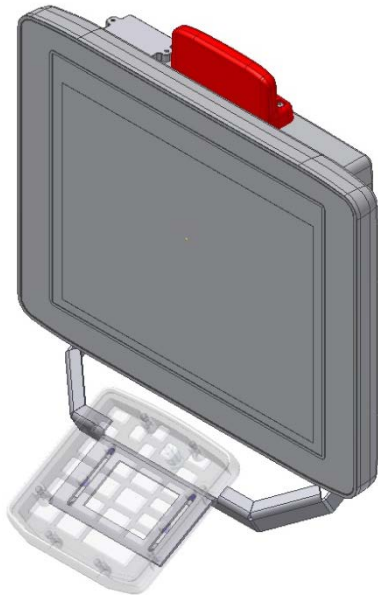
3.1. Availability Matrix

Availability Matrix Keyboard Mountings											
P/N	Description	DLT-V7310	DLT-V7312/P+	DLT-V8310	DLT-V8312	DLT-V8315	DLT-V7210	DLT-V7212	DLT-V7210 K, KD	DLT-V7212/15 P+	DLT-V6210FL
DL-MTKT010	Mounting Kit SMALL/24 Keyboard Front DLT-V8310/12 / DLT-V7210/12	-	-	✓	✓	-	✓	✓	-	-	-
DL-MTKT003	Mounting Kit SMALL/24 Keyboard Front DLT-V8315	-	-	-	-	✓	-	-	-	-	-
DL-MTKT014	Mounting kit BOTTOM for 21key and 65key keyboard DLT-V73	✓	✓	-	-	-	-	-	-	-	-
DL-MTKT015	Mounting kit RIGHT for 21key keyboard DLT-V73	✓	✓	-	-	-	-	-	-	-	-
DL-MTKT016	Mounting kit LEFT for 21key keyboard DLT-V73	✓	✓	-	-	-	-	-	-	-	-

3.2. Mounting Kit SMALL/24 Keyboard Front DLT-V8310/12 and DLT-V7210/12

P/N	DLT-V7310	DLT-V7312/P+	DLT-V8310	DLT-V8312	DLT-V8315	DLT-V7210	DLT-V7212	DLT-V7210 K, KD	DLT-V7212/15 P+	DLT-V6210FL
DL-MTKT010										
Availability	-	-	✓	✓	-	✓	✓	-	-	-
Operation class	-	-	5M3	5M3	-	5M3	5M3	-	-	-

Example: DLT-V7212

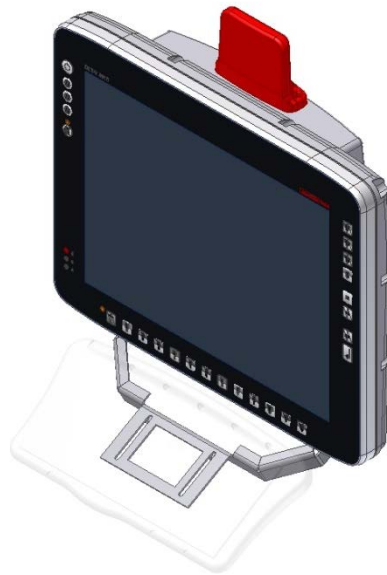


Technical data	
Application	For raw industrial environment and vehicles
Material	Steel ST 37-2 powder coated
Scope of delivery	4 x Nut M4 hex. with Cone Washer 4 x Screw Cyl.int.hex DIN912 M6x10 A2 TufLok 2 x Screw Cyl.int.hex DIN912 M6x12 A2 TufLok 2 x Post D=12 d=8.4 L=3 ST ZN 6 x Washer D=12 d=6 t=1.6 ISO 8738 (DIN 1440) A6 A2 1 x Keyboard console small 24 keyb. front BlackC DLT

3.3. Mounting Kit SMALL/24 Keyboard Front DLT-V8315

P/N DL-MTKT003	DLT- V7310	DLT- V7312/P+	DLT- V8310	DLT- V8312	DLT- V8315	DLT- V7210	DLT- V7212	DLT- V7210 K, KD	DLT- V7212/15 P+	DLT- V6210FL
Availability	-	-	-	-	✓	-	-	-	-	-
Operation class	-	-	-	-	5M2	-	-	-	-	-

Example: DLT-V8315

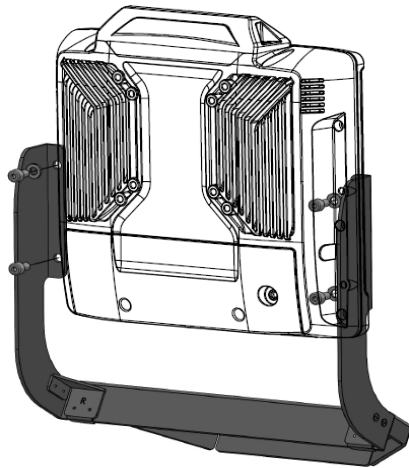


Technical data	
Application	For raw industrial environment and vehicles
Material	Steel ST 37-2 powder coated
Scope of delivery	4 x Nut M4 hex. with Cone Washer 4 x Screw Cyl.int.hex DIN912 M6x10 A2 TufLok 2 x Screw Cyl.int.hex DIN912 M6x12 A2 TufLok 6 x Washer D=12 d=6 t=1.6 ISO 8738 (DIN 1440) A6 A2 2 x Post D=12 d=8.4 L=3 ST ZN 1 x Keyboard console small 24 keyb. front DLT-V83

3.4 Mounting kit BOTTOM for 21key and 65key keyboard DLT-V73

P/N	DLT-V7310	DLT-V7312/P+	DLT-V8310	DLT-V8312	DLT-V8315	DLT-V7210	DLT-V7212	DLT-V7210 K, KD	DLT-V7212/15 P+	DLT-V6210FL
DL-MTKT014										
Availability	✓	✓	-	-	-	-	-	-	-	-
Operation class	5M3	5M3	-	-	-	-	-	-	-	-

Example: DLT-V7310



Technical data	
Application	For raw industrial environment and vehicles VESA 50 & 75
Material	Steel ST 37-2 powder coated
Scope of delivery	4 x Washer A6.4 DIN125 FE/ZN FORM A D12 d6.4 t1.6 4 x Screw Cyl.int.hex DIN912 M6x10 A2 TufLok 1 x SIK-65 Keyboard Bracket for V73 Powder Black C 4 x Washer D=12 d=4.3 t=1.0 ST NI 4 x Screw M4x8L RH D=7.22 H=4 h SUS NK

3.5 Mounting kit RIGHT for 21key keyboard DLT-V73

P/N	DLT-V7310	DLT-V7312/P+	DLT-V8310	DLT-V8312	DLT-V8315	DLT-V7210	DLT-V7212	DLT-V7210 K, KD	DLT-V7212/15 P+	DLT-V6210FL
DL-MTKT015										
Availability	✓	✓	-	-	-	-	-	-	-	-
Operation class	5M3	5M3	-	-	-	-	-	-	-	-

Example: DLT-V7310



Technical data	
Application	For raw industrial environment and vehicles VESA 50 & 75
Material	Steel ST 37-2 powder coated
Scope of delivery	2 x Washer A6.4 DIN125 FE/ZN FORM A D12 d6.4 t1.6 2 x Screw Cyl.int.hex DIN912 M6x10 A2 TufLok 1 x SIK-21 Keyboard Right Bkt for V73 Powder Black C 4 x Washer D=12 d=4.3 t=1.0 ST NI 4 x Screw M4x8L RH D=7.22 H=4 h SUS NK

3.6 Mounting kit LEFT for 21key keyboard DLT-V73

P/N	DLT-V7310	DLT-V7312/P+	DLT-V8310	DLT-V8312	DLT-V8315	DLT-V7210	DLT-V7212	DLT-V7210 K, KD	DLT-V7212/15 P+	DLT-V6210FL
DL-MTKT016	✓	✓	-	-	-	-	-	-	-	-
Availability	✓	✓	-	-	-	-	-	-	-	-
Operation class	5M3	5M3	-	-	-	-	-	-	-	-





Example: DLT V7310







Technical data	
Application	For raw industrial environment and vehicles VESA 50 & 75
Material	Steel ST 37-2 powder coated
Scope of delivery	2 x Washer A6.4 DIN125 FE/ZN FORM A D12 d6.4 t1.6 2 x Screw Cyl.int.hex DIN912 M6x10 A2 TufLok 1 x SIK-21 Keyboard LEFT Bkt for V73 Powder Black C 4 x Washer D=12 d=4.3 t=1.0 ST NI 4 x Screw M4x8L RH D=7.22 H=4 h SUS NK

4. SCANNER MOUNTINGS

4.1. Availability Matrix

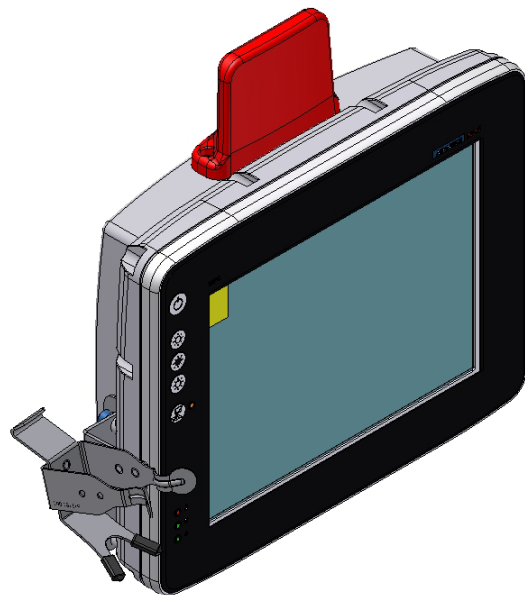
Availability Matrix Scanner Mountings												
P/N	Description	DLT-V7310	DLT-V7312/P+	DLT-V8310	DLT-V8312	DLT-V8315	DLT-V7210	DLT-V7212	DLT-V7210 K, KD	DLT-V7212/15 P+	DLT-V6210FL	DLT-V7310
DL-MTSC006	Scanner Mounting, 10" LEFT, LS34xx, LS35xx	-	-	✓	-	-	✓	-	✓	✓	-	-
DL-MTSC007	Scanner Mounting, 10" RIGHT, LS34xx, LS35xx	-	-	✓	-	-	✓	-	✓	✓	-	-
DL-MTSC001	Scanner Mounting, 10" RIGHT, LS34xx, LS35xx	-	-	-	-	-	-	-	-	-	-	✓
DL-MTSC004	Scanner Mounting, 12" LEFT, LS34xx, LS35xx	-	-	-	✓	-	-	✓	-	-	-	-
DL-MTSC005	Scanner Mounting, 12" RIGHT, LS34xx, LS35xx	-	-	-	✓	-	-	✓	-	-	-	-
DL-MTSC003	Scanner Mounting, 15" RIGHT, LS34xx, LS35xx	-	-	-	-	✓	-	-	-	-	✓	-
DL-MTSC002	Scanner Mounting, 10" RIGHT, DS36xx	-	-	✓	-	-	✓	-	✓	-	-	-
DL-MTSC009	Scanner Mounting, 15" RIGHT, DS36xx	-	-	-	-	✓	-	-	-	-	-	-
DL-MTSC010	Scanner Mounting, 12" RIGHT, LI3678	-	-	-	-	-	-	✓	-	-	-	-

Availability Matrix Scanner Mountings												
		DLT-V7310	DLT-V7312 /P+	DLT-V8310	DLT-V8312	DLT-V8315	DLT-V7210	DLT-V7212	DLT-V7210 K, KD	DLT-V7212/15 P+	DLT-V6210FL	DLT-V7310
DL-MTSC011	Scanner Mounting,10"RIGHT, DS36xx	✓	-	-	-	-	-	-	-	-	-	-
DL-MTSC017	Scanner Mounting,12"RIGHT, DS36xx	-	✓	-	-	-	-	-	-	-	-	-
DL-MTSC015	Scanner Mounting,10"LEFT, LS34xx, LS35xx	✓	-	-	-	-	-	-	-	-	-	-
DL-MTSC013	Scanner Mounting,12"LEFT, LS34xx, LS35xx	-	✓	-	-	-	-	-	-	-	-	-
DL-MTSC016	Scanner Mounting,10"RIGHT, LS34xx, LS35xx	✓	-	-	-	-	-	-	-	-	-	-
DL-MTSC014	Scanner Mounting,12"RIGHT, LS34xx, LS35xx	-	✓	-	-	-	-	-	-	-	-	-

4.2. Scanner Mounting, LEFT, LS34xx, LS35xx

P/N	DLT-V7310	DLT-V7312/P+	DLT-V8310	DLT-V8312	DLT-V8315	DLT-V7210	DLT-V7212	DLT-V7210 K, KD	DLT-V7212/15 P+	DLT-V6210FL	DLT-V7310
Availability (DL-MTSC006)	-	-	✓	-	-	✓	-	✓	✓	-	-
Operation class	-	-	5M3	-	-	5M3	-	5M3	5M3	-	-
Availability (DL-MTSC004)	-	-	-	✓	-	-	✓	-	-	-	-
Operation class	-	-	-	5M3	-	-	5M3	-	-	-	-

Example: DLT-V8310

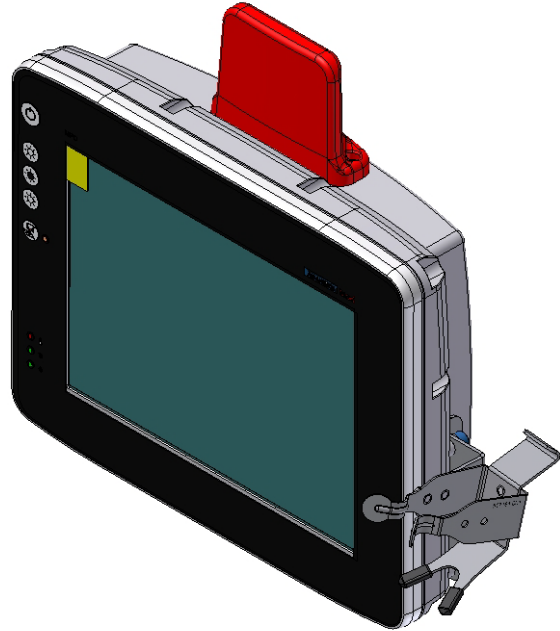


Technical data	
Application	For rough industrial environment and vehicles.
Material	Steel St 37-2 powder coated
Scope of delivery	<ul style="list-style-type: none"> 3 x Washer ISO 8738 (DIN 1440)-A6-A2 4 x Nut M4 hex. with Cone Washer B=7 D=10.41 H=4 3 x Screw Cyl.int.hex DIN912 M6x10 A2 TufLok 1 x Spring clip 1 complete hand-held scanner coated 1 x Holder for scanner left DLT-V83 2 x PO VCP CAP (Dust cover) D3.2X13 PVC IP1X 1 x Connection plate 4 spring clip handheld scanner 1 x Spring clip 1 hand-held scanner coated

4.3. Scanner Mounting, RIGHT, LS34xx, LS35xx

P/N	DLT-V7310	DLT-V7312/P+	DLT-V8310	DLT-V8312	DLT-V8315	DLT-V7210	DLT-V7212	DLT-V7210 K, KD	DLT-V7212/15 P+	DLT-V6210FL	DLT-V7310
Availability (DL-MTSC007)	-	-	✓	-	-	✓	-	✓	✓	-	-
Operation class	-	-	5M3	-	-	5M3	-	5M3	5M3	-	-
Availability (DL-MTSC001)	-	-	-	-	-	-	-	-	-	-	✓
Operation class	-	-	-	-	-	-	-	-	-	-	5M3
Availability (DL-MTSC005)	-	-	-	✓	-	-	✓	-	-	-	-
Operation class	-	-	-	5M3	-	-	5M3	-	-	-	-
Availability (DL-MTSC003)	-	-	-	-	✓	-	-	-	-	✓	-
Operation class	-	-	-	-	5M3	-	-	-	-	5M3	-

Example: Scanner Mounting



Technical data	
Application	For rough industrial environment and vehicles.
Material	Steel St 37-2 powder coated
Scope of delivery	<ul style="list-style-type: none"> 3 x Washer ISO 8738 (DIN 1440)-A6-A2 4 x Nut M4 hex. with Cone Washer B=7 D=10.41 H=4 3 x Screw Cyl.int.hex DIN912 M6x10 A2 TufLok 1 x Holder for scanner right 1 x Spring clip 1 complete hand-held scanner coated 2 x PO VCP CAP (Dust cover) D3.2X13 PVC IP1X 1 x Connection plate 4 spring clip handheld scanner 1 x Spring clip 1 hand-held scanner coated

4.4. Scanner Mounting, RIGHT, DS36xx

P/N	DLT-V7310	DLT-V7312/P+	DLT-V8310	DLT-V8312	DLT-V8315	DLT-V7210	DLT-V7212	DLT-V7210 K, KD	DLT-V7212/15 P+	DLT-V6210FL	DLT-V7310
Availability (DL-MTSC002)	-	-	✓	-	-	✓	-	✓	-	-	-
Operation class	-	-	5M3	-	-	5M3	-	5M3	-	-	-
Availability (DL-MTSC008)	-	-	-	✓	-	-	✓	-	-	-	-
Operation class	-	-	-	5M3	-	-	5M3	-	-	-	-
Availability (DL-MTSC009)	-	-	-	-	✓	-	-	-	-	-	-
Operation class	-	-	-	-	5M3	-	-	-	-	-	-

Example: Scanner Mounting

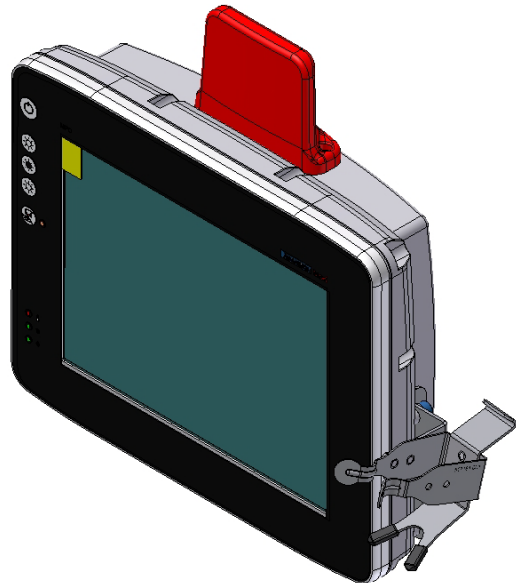


Technical data	
Application	For rough industrial environment and vehicles.
Material	Steel St 37-2 powder coated
Scope of delivery	3 x Washer D=12 d=6 t=1.6 ISO 8738 (DIN 1440) A6 A2 4 x Nut M4 hex. with Cone Washer B=7 D=10.41 H=4 3 x Screw Cyl.int.hex DIN912 M6x10 A2 TufLok 1 x Spring clip 1 complete hand-held scanner coated 1 x Holder for scanner right DLT-V83 2 x PO VCP CAP (Dust cover) D3.2X13 PVC IP1X 1 x Connection plate 4 spring clip handheld scanner 1 x Spring clip 1 hand-held scanner coated

4.5. Scanner Mounting, 12" RIGHT LI3678

P/N (DL-MTSC010)	DLT- V7310	DLT- V7312/P+	DLT- V8310	DLT- V8312	DLT- V8315	DLT- V7210	DLT- V7212	DLT- V7210 K, KD	DLT- V7212/15 P+	DLT- V6210FL	DLT- V7310
Availability	-	-	-	-	-	-	✓	-	-	-	-
Operation class	-	-	-	-	-	-	5M3	-	-	-	-

Example: Scanner Mounting

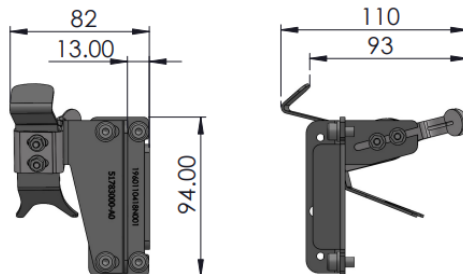
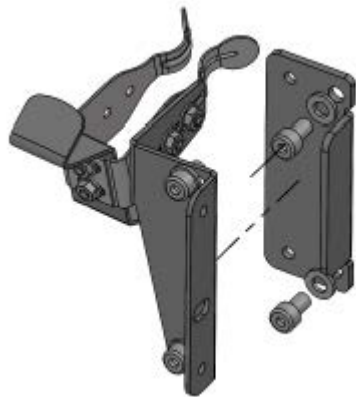


Technical data	
Application	For rough industrial environment and vehicles.
Material	Steel St 37-2 powder coated
Scope of delivery	<ul style="list-style-type: none"> 3 x Washer ISO 8738 (DIN 1440)-A6-A2 4 x Nut M4 hex. with Cone Washer B=7 D=10.41 H=4 3 x Screw Cyl.int.hex DIN912 M6x10 A2 TufLok 1 x Holder for scanner right 1 x Spring clip 1 complete hand-held scanner coated 2 x PO VCP CAP (Dust cover) D3.2X13 PVC IP1X 1 x Connection plate 4 spring clip handheld scanner 1 x Spring clip 1 hand-held scanner coated

4.6. Scanner Mounting, 10"RIGHT, DS36xx

P/N	DLT-V7310	DLT-V7312/P+	DLT-V8310	DLT-V8312	DLT-V8315	DLT-V7210	DLT-V7212	DLT-V7210 K, KD	DLT-V7212/15 P+	DLT-V6210FL	DLT-V7310
DL-MTSC011											
Availability	✓	-	-	-	-	-	-	-	-	-	-
Operation class	5M3	-	-	-	-	-	-	-	-	-	-

Example: DLT-V7310



Technical data	
Application	For rough industrial environment and vehicles.
Material	Steel St 37-2 powder coated
Scope of delivery	4 x Washer D=12 d=6 t=1.6 ISO 8738 (DIN 1440) A6 A2 4 x Nut M4 hex. with Cone Washer B=7 D=10.41 H=4 4 x Screw Cyl.int.hex DIN912 M6x10 A2 TufLok 1 x Holder for scanner right DLT-V83+UTC 1 x Spring clip 1 hand-held scanner coated 1 x Spring clip 1 complete hand-held scanner coated 1 x connecton plate handheld scanner DLT-V83 1 x MTSC Adapter Plate for V73 Powder Black 2 x PO VCP CAP (Dust cover) D3.2X13 PVC IP1X

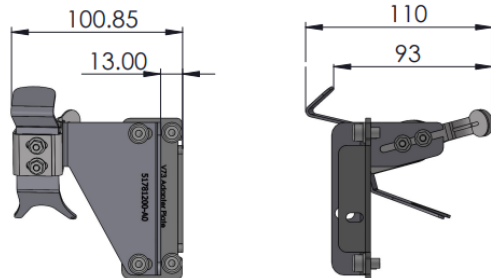
4.7. Scanner Mounting, 12"RIGHT, DS36xx

P/N	DLT-V7310	DLT-V7312/P+	DLT-V8310	DLT-V8312	DLT-V8315	DLT-V7210	DLT-V7212	DLT-V7210 K, KD	DLT-V7212/15 P+	DLT-V6210FL	DLT-V7310
DL-MTSC017											
Availability	-	✓	-	-	-	-	-	-	-	-	-
Operation class	-	5M3	-	-	-	-	-	-	-	-	-

Example: DLT-V7312



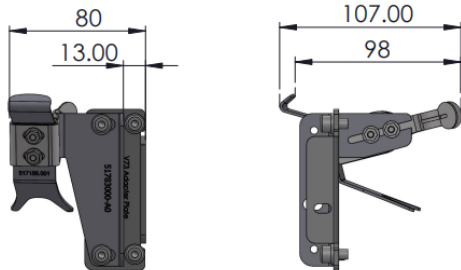
Technical data	
Application	For rough industrial environment and vehicles.
Material	Steel St 37-2 powder coated
Scope of delivery	4 x Washer D=12 d=6 t=1.6 ISO 8738 (DIN 1440) A6 A2 4 x Nut M4 hex. with Cone Washer B=7 D=10.41 H=4 4 x Screw Cyl.int.hex DIN912 M6x10 A2 TufLok 1 x Spring clip 1 hand-held scanner coated 1 x Spring clip 1 complete hand-held scanner coated 1 x connecton plate handheld scanner DLT-V83 1 x MTSC Adapter Plate for V73 Powder Black 2 x PO VCP CAP(Dust cover) D3.2X13 PVC IP1X



4.8. Scanner Mounting, 10" LEFT, LS34xx, LS35xx

P/N DL-MTSC015	DLT- V7310	DLT- V7312/P+	DLT- V8310	DLT- V8312	DLT- V8315	DLT- V7210	DLT- V7212	DLT- V7210 K, KD	DLT- V7212/15 P+	DLT- V6210FL	DLT- V7310
Availability	✓	-	-	-	-	-	-	-	-	-	-
Operation class	5M3	-	-	-	-	-	-	-	-	-	-

Example: DLT-V7310 right

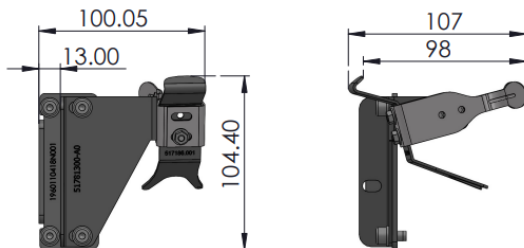


Technical data	
Application	For rough industrial environment and vehicles.
Material	Steel St 37-2 powder coated
Scope of delivery	4 x Washer D=12 d=6 t=1.6 ISO 8738 (DIN 1440) A6 A2 4 x Nut M4 hex. with Cone Washer B=7 D=10.41 H=4 4 x Screw Cyl.int.hex DIN912 M6x10 A2 TufLok 1 x Spring clip 1 hand-held scanner coated 1 x Spring clip 1 complete hand-held scanner coated 1 x Connection plate 4 spring clip handheld scanner 1 x Holder for scanner left DLT-V83 1 x MTSC Adapter Plate for V73 Powder Black 2 x PO VCP CAP(Dust cover) D3.2X13 PVC IP1X

4.9. Scanner Mounting, 12" LEFT, LS34xx, LS35xx

P/N	DLT-V7310	DLT-V7312/P+	DLT-V8310	DLT-V8312	DLT-V8315	DLT-V7210	DLT-V7212	DLT-V7210 K, KD	DLT-V7212/15 P+	DLT-V6210FL	DLT-V7310
DL-MTSC013											
Availability	-	✓	-	-	-	-	-	-	-	-	-
Operation class	-	5M3	-	-	-	-	-	-	-	-	-

Example: DLT-V7312

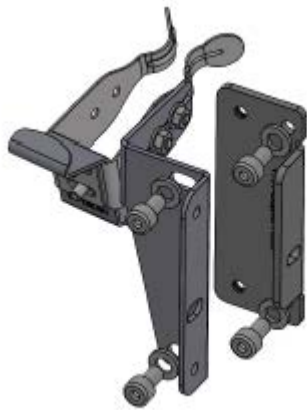


Technical data	
Application	For rough industrial environment and vehicles.
Material	Steel St 37-2 powder coated
Scope of delivery	4 x Washer D=12 d=6 t=1.6 ISO 8738 (DIN 1440) A6 A2 4 x Nut M4 hex. with Cone Washer B=7 D=10.41 H=4 4 x Screw Cyl.int.hex DIN912 M6x10 A2 TufLok 1 x Spring clip 1 hand-held scanner coated 1 x Spring clip 1 complete hand-held scanner coated 1 x Connection plate 4 spring clip handheld scanner 1 x Holder for scanner left DLT-V83 1 x MTSC Adapter Plate for V73 Powder Black 2 x PO VCP CAP(Dust cover) D3.2X13 PVC IP1X

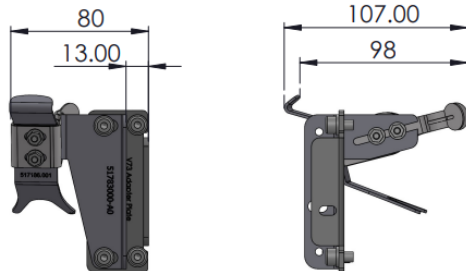
4.10. Scanner Mounting, 10"RIGHT, LS34xx, LS35xx

P/N	DLT-V7310	DLT-V7312/P+	DLT-V8310	DLT-V8312	DLT-V8315	DLT-V7210	DLT-V7212	DLT-V7210 K, KD	DLT-V7212/15 P+	DLT-V6210FL	DLT-V7310
DL-MTSC016											
Availability	✓	-	-	-	-	-	-	-	-	-	-
Operation class	5M3	-	-	-	-	-	-	-	-	-	-

Example: DLT-V7310



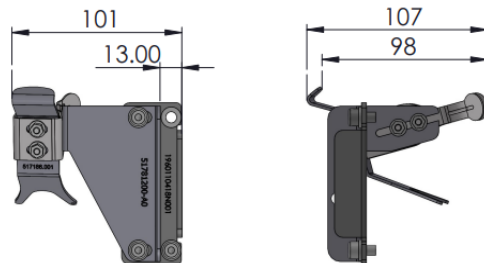
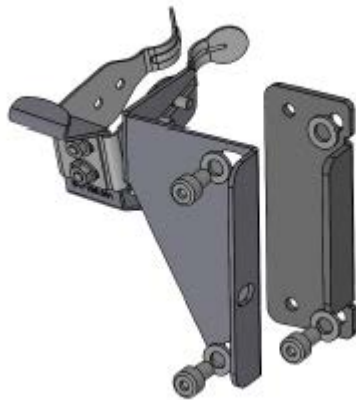
Technical data	
Application	For rough industrial environment and vehicles.
Material	Steel St 37-2 powder coated
Scope of delivery	4 x Washer D=12 d=6 t=1.6 ISO 8738 (DIN 1440) A6 A2 4 x Nut M4 hex. with Cone Washer B=7 D=10.41 H=4 4 x Screw Cyl.int.hex DIN912 M6x10 A2 TufLok 1 x Holder for scanner right DLT-V83+UTC 1 x Spring clip 1 hand-held scanner coated 1 x Spring clip 1 complete hand-held scanner coated 1 x Connection plate 4 spring clip handheld scanner 1 x MTSC Adapter Plate for V73 Powder Black 2 x PO VCP CAP (Dust cover) D3.2X13 PVC IP1X



4.11. Scanner Mounting, 12" RIGHT, LS34xx, LS35xx

P/N	DLT-V7310	DLT-V7312/P+	DLT-V8310	DLT-V8312	DLT-V8315	DLT-V7210	DLT-V7212	DLT-V7210 K, KD	DLT-V7212/15 P+	DLT-V6210FL	DLT-V7310
DL-MTSC014											
Availability	-	✓	-	-	-	-	-	-	-	-	-
Operation class	-	5M3	-	-	-	-	-	-	-	-	-

Example: DLT-V7312




Technical data

Application	For rough industrial environment and vehicles.
Material	Steel St 37-2 powder coated

Scope of delivery	<ul style="list-style-type: none"> 4 x Washer D=12 d=6 t=1.6 ISO 8738 (DIN 1440) A6 A2 4 x Nut M4 hex. with Cone Washer B=7 D=10.41 H=4 4 x Screw Cyl.int.hex DIN912 M6x10 A2 TufLok 1 x Spring clip 1 hand-held scanner coated 1 x Spring clip 1 complete hand-held scanner coated 1 x Connection plate 4 spring clip handheld scanner 1 x MTSC Adapter Plate for V73 Powder Black 2 x PO VCP CAP (Dust cover) D3.2X13 PVC IP1X
-------------------	--

5 TOUCH STYLUS

5.1. Availability Matrix

Availability Matrix Touch Stylus												
P/N	Description	DLT-V7310	DLT-V7312/P+	DLT-V8310	DLT-V8312	DLT-V8315	DLT-V7210	DLT-V7212	DLT-V7210 K, KD	DLT-V7212/15 P+	DLT-V6210FL	DLT-V7310
DL-STYL006	Stylus with mounting regular for resistive touch	-	-	✓	✓	-	✓	-	-	-	-	-
DL-STYL010	Stylus with mounting regular for PCT	-	-	✓	✓	-	✓	-	✓	✓	-	✓
DL-STYL008	Stylus with mounting large for resistive touch	-	-	-	-	✓	-	✓	-	-	-	-
DL-STYL009	Stylus with mounting large for PCT	-	-	-	-	✓	-	✓	-	✓	-	-
DL-STYL011	V73 Stylus w. mounting regular resist.	✓	✓	-	-	-	-	-	-	-	-	-
DL-STYL012	V73 Stylus w. mounting regular PCT	✓	✓	-	-	-	-	-	-	-	-	-

5.2. Stylus with mounting regular for resistive touch

P/N DL-STYL006	DLT- V7310	DLT- V7312/P+	DLT- V8310	DLT- V8312	DLT- V8315	DLT- V7210	DLT- V7212	DLT- V7210 K, KD	DLT- V7212/15 P+	DLT- V6210FL	DLT- V7310
Availability	-	-	✓	✓	-	✓	-	-	-	-	-
Operation class	-	-	5M3	5M3	-	5M3	-	-	-	-	-

Example- Stylus for resistive touch

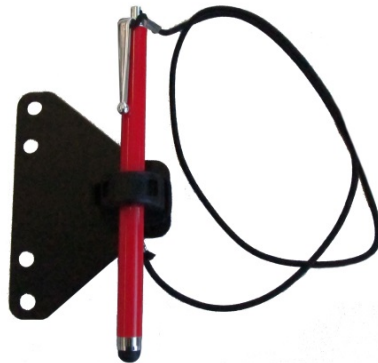


Technical data	
Application	For rough industrial environment and vehicles
Scope of delivery	2 x Washer D=12 d=6 t=1.6 ISO 8738 (DIN 1440) A6 A2 1 x Screw Cyl.int.hex DIN912 M5x8 A2 2 x Screw Cyl.int.hex DIN912 M6x10 A2 TufLok 1 x Regular mounting panel for stylus DLT-V83 1 x Plastic rope 55cm for pen fixation 1 x Nylon retainer for stylus - multi use FLEXICON 1 x Stylus resistive touch with spring - AST

5.3. Stylus with mounting regular for PCT

P/N DL-STYL010	DLT- V7310	DLT- V7312/P+	DLT- V8310	DLT- V8312	DLT- V8315	DLT- V7210	DLT- V7212	DLT- V7210 K, KD	DLT- V7212/15 P+	DLT- V6210FL	DLT- V7310
Availability	-	-	✓	✓	-	✓	-	✓	✓	-	✓
Operation class	-	-	5M3	5M3	-	5M3	-	5M3	5M3	-	5M3

Example- Stylus for PCT



Technical data	
Application	For rough industrial environment and vehicles
Scope of delivery	2 x Washer D=12 d=6 t=1.6 ISO 8738 (DIN 1440) A6 A2 1 x Screw Cyl.int.hex DIN912 M5x8 A2 2 x Screw Cyl.int.hex DIN912 M6x10 A2 TufLok 1 x Key Ring d 10mm 1 x Regular mounting panel for stylus DLT-V83 1 x Plastic rope 55cm for pen fixation 1 x Nylon retainer for stylus - multi use FLEXICON 1 x Stylus for PCT touch - ADLoG brand

5.4. Stylus with mounting large resistive

P/N DL-STYL008	DLT- V7310	DLT- V7312/P+	DLT- V8310	DLT- V8312	DLT- V8315	DLT- V7210	DLT- V7212	DLT- V7210 K, KD	DLT- V7212/15 P+	DLT- V6210FL	DLT- V7310
Availability	-	-	-	-	✓	-	✓	-	-	-	-
Operation class	-	-	-	-	5M3	-	5M3	-	-	-	-

Example- Stylus

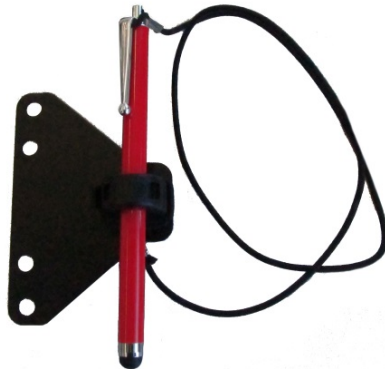


Technical data	
Application	For rough industrial environment and vehicles
Scope of delivery	2 x Washer D=12 d=6 t=1.6 ISO 8738 (DIN 1440) A6 A2 1 x Screw Cyl.int.hex DIN912 M5x8 A2 2 x Screw Cyl.int.hex DIN912 M6x10 A2 TufLok 1 x large mounting panel for stylus 1 x Plastic rope 55cm for pen fixation 1 x Nylon retainer for stylus - multi use FLEXICON 1 x Stylus resistive touch with spring - AST

5.5. Stylus with mounting large for PCT

P/N	DLT-V7310	DLT-V7312/P+	DLT-V8310	DLT-V8312	DLT-V8315	DLT-V7210	DLT-V7212	DLT-V7210 K, KD	DLT-V7212/15 P+	DLT-V6210FL	DLT-V7310
DL-STYL009											
Availability	-	-	-	-	✓	-	✓	-	-	✓	-
Operation class	-	-	-	-	5M3	-	5M3	-	-	5M3	-

Example- Stylus



Technical data	
Application	For rough industrial environment and vehicles
Scope of delivery	<ul style="list-style-type: none"> 2 x Washer ISO 8738 (DIN 1440)-A6-A2 1 x Screw Cyl.int.hex DIN912 M5x8 A2 2 x Screw Cyl.int.hex DIN912 M6x10 A2 TufLok 1 x Key Ring d 10mm 1 x Large mounting panel for stylus 1 x Plastic rope 55cm for pen fixation 1 x Nylon retainer for stylus - multi use FLEXICON 1 x Stylus for PCT touch - ADLoG brand

5.6. V73 Stylus w. mounting regular resist.

P/N DL-STYL011	DLT- V7310	DLT- V7312/P+	DLT- V8310	DLT- V8312	DLT- V8315	DLT- V7210	DLT- V7212	DLT- V7210 K, KD	DLT- V7212/15 P+	DLT- V6210FL	DLT- V7310
Availability	✓	✓	-	-	-	-	-	-	-	-	-
Operation class	5M3	5M3	-	-	-	-	-	-	-	-	-

Example- Stylus

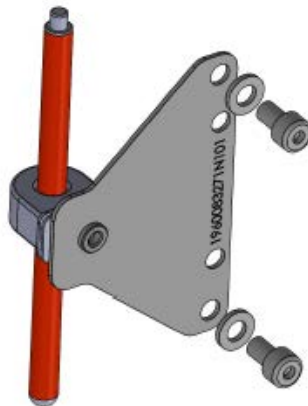


Technical data	
Application	For rough industrial environment and vehicles
Scope of delivery	2 x Washer ISO 8738 (DIN 1440)-A6-A2 1 x Screw Cyl.int.hex DIN912 M5x8 A2 2 x Screw Cyl.int.hex DIN912 M6x10 A2 TufLok 1 x Plastic rope 55cm for pen fixation 1 x Nylon retainer for stylus - multi use FLEXICON 1 x Stylus resistive touch with spring – AST 1 x Regular mounting panel for stylus for V83 Powder

5.7. V73 Stylus with mounting regular PCT

P/N DL-STYL012	DLT- V7310	DLT- V7312/P+	DLT- V8310	DLT- V8312	DLT- V8315	DLT- V7210	DLT- V7212	DLT- V7210 K, KD	DLT- V7212/15 P+	DLT- V6210FL	DLT- V7310
Availability	✓	✓	-	-	-	-	-	-	-	-	-
Operation class	5M3	5M3	-	-	-	-	-	-	-	-	-

Example: Stylus



Technical data	
Application	For rough industrial environment and vehicles
Scope of delivery	<ul style="list-style-type: none"> 2 x Washer ISO 8738 (DIN 1440)-A6-A2 1 x Screw Cyl.int.hex DIN912 M5x8 A2 2 x Screw Cyl.int.hex DIN912 M6x10 A2 TufLok 1 x Plastic rope 55cm for pen fixation 1 x Nylon retainer for stylus - multi use FLEXICON 1 x Stylus for PCT touch - ADLoG brand 1 x Regular mounting panel for stylus for V83 Powder 1 x Key Ring d 10mm

6 REMOTE ANTENNAS

The antenna is a critical technical component for ensuring a stable radio link. Especially in challenging industrial environments such as warehouses and production facilities, there are no easy solutions with regard to wave propagation. No off-the-rack solution will work here and this is why Advantech offers custom solutions.

Solid driver cabs can significantly interfere with the radio link. For this application, we recommend so-called **remote antennas**, which are not attached directly to the vehicle terminal but rather on the vehicle roof, for example. They have better reception at this location.

To facilitate these types of configurations, Advantech Service IoT offers remote antennas from selected manufacturers.

When selecting the remote antennas, we take a range of factors into account to ensure that they are optimally matched to our terminals and to the respective customer application. This includes technical data such as radiation characteristics and efficiency.

6.1. Availability Matrix

Availability Matrix Remote Antennas											
P/N	Description	DLT-V7310	DLT-V7312/P +	DLT-V8310	DLT-V8312	DLT-V8315	DLT-V7210	DLT-V7212	DLT-V7210 K, KD	DLT-V7212/15 P+	DLT-V6210FL
9768ANTN011	WLAN kit external Antenna 4 dBi for DLT-V83	-	-	✓	✓	✓	-	-	-	-	-
9768ANTN001	WLAN kit external Antenna 4 dBi	✓	✓	-	-	-	✓	✓	✓	✓	✓
9768ANTN009	Mounting kit WLAN WWAN GPS Antenna remote EU	-	-	✓	✓	✓	-	-	-	-	✓
9768ANTN010	Mounting kit WLAN WWAN GPS Antenna remote EU for DLT-V72	-	-	-	-	-	✓	✓	✓	✓	-
1750008940-01	WWAN kit external Antenna for DLT-V6210FL	-	-	-	-	-	-	-	-	-	✓
968AD00353	External GPS receiver	-	-	✓	✓	✓	✓	✓	✓	✓	✓
9768ANTN015	WWAN GPS Antenna remote	✓	✓	-	-	-	-	-	-	-	-

6.2. WLAN kit external Antenna 4 dBi for DLT-V83

P/N	Description	DLT-V7310	DLT-V7312/P+	DLT-V8310	DLT-V8312	DLT-V8315	DLT-V7210	DLT-V7212	DLT-V7210 K, KD	DLT-V7212/15 P+	DLT-V6210FL
9768ANTN011	WLAN kit Antenna 4dBi remote for DLT-V83	-	-	✓	✓	✓	-	-	-	-	-

Example- Antenna 4 dBi



Technical data	
Application	For rough industrial environment and vehicles.
Scope of delivery	<ul style="list-style-type: none"> 1 x Sencity Ant.2.4+5G WIFI 4dBi Omni antenna with fixing plate 1 x Ext. Ant. N-male to SMA reverse pol.-male cable 3 meter 1 x Housing cover blind cap (DLT-V83 housing antenna hole cover) 1 x Cable Ant. SMA/F-R-BH MHF4/113 BLK 200mm (DLT-V83 internal pigtail)

6.3. WLAN kit external Antenna 4 dBi

P/N	Description	DLT-V7310	DLT-V7312/P+	DLT-V8310	DLT-V8312	DLT-V8315	DLT-V7210	DLT-V7212	DLT-V7210 K, KD	DLT-V7212/15 P+	DLT-V6210FL
9768ANTN001	WLAN kit external Antenna 4 dBi	✓	✓	-	-	-	✓	✓	✓	✓	✓

Example- Antenna 4 dBi



Technical data	
Application	For rough industrial environment and vehicles
Scope of delivery	1 x Sencity Ant.2.4+5G WIFI 4dBi Omni antenna with fixing plate 1 x Ext. Ant. N-male to SMA reverse pol.-male cable 3 meter

6.4. Mounting kit WLAN WWAN GPS Antenna remote EU

P/N	Description	DLT-V7310	DLT-V7312/P+	DLT-V8310	DLT-V8312	DLT-V8315	DLT-V7210	DLT-V7212	DLT-V7210 K, KD	DLT-V7212/15 P+	DLT-V6210FL
9768ANTN009	Mounting kit WLAN WWAN GPS Antenna remote EU	-	-	✓	✓	✓	-	-	-	-	✓

Example- Mounting Kit



Technical data	
Application	For rough industrial environment and vehicles.
Scope of delivery	<p>WLAN set</p> <ul style="list-style-type: none"> 1 x Sencity Ant.2.4+5G WIFI 4dBi Omni antenna with fixing plate 1 x Ext. Ant. N-male to SMA reverse pol.-male cable 3 meter 1 x Housing cover blind cap (DLT-V83 housing antenna hole cover) 1 x Cable Ant. SMA/F-R-BH MHF4/113 BLK 200mm (DLT-V83 internal pigtail) <p>WWAN</p> <ul style="list-style-type: none"> 1 x Ext antenna cable 3meter 1 x Monopole/C 2G/3G/4G 2.2dBi SMA/M CFD-200 Black antenna 1 x Cable Ant. SMA/F-BH MHF1/137 WHT L175mm (DLT-V internal pigtail) <p>GPS</p> <ul style="list-style-type: none"> 1 x External GPS receiver with 1.5 m USB connector 1 x Installation CD

6.5. Mounting kit WLAN WWAN GPS Antenna remote EU for DLT-V72

P/N	Description	DLT-V7310	DLT-V7312/P+	DLT-V8310	DLT-V8312	DLT-V8315	DLT-V7210	DLT-V7212	DLT-V7210 K, KD	DLT-V7212/15 P+	DLT-V6210FL
9768ANTN010	Mounting kit WLAN WWAN GPS Antenna remote	-	-	-	-	-	✓	✓	✓	✓	-

Example- Mounting Kit



Technical data	
Application	For rough industrial environment and vehicles.
Scope of delivery	<p>WLAN set</p> <ul style="list-style-type: none"> 1 x Sencity Ant.2.4+5G WIFI 4dBi Omni antenna with fixing plate 1 x Ext. Ant. N-male to SMA reverse pol.-male cable 3 meter <p>WWAN</p> <ul style="list-style-type: none"> 1 x Ext antenna cable 3meter 1 x Monopole/C 2G/3G/4G 2.2dBi SMA/M CFD-200 Black antenna 1 x Cable Ant. SMA/F-BH MHF1/137 WHT L175mm (DLT-V internal pigtail) <p>GPS</p> <ul style="list-style-type: none"> 1 x External GPS receiver with 1.5 m USB connector 1 x Installation CD

6.6. WWAN 4G antenna for DLT-V6210FL

P/N	Description	DLT-V7310	DLT-V7312/P+	DLT-V8310	DLT-V8312	DLT-V8315	DLT-V7210	DLT-V7212	DLT-V7210 K, KD	DLT-V7212/15 P+	DLT-V6210FL
1750008940-01	WWAN 4G antenna	-	-	-	-	-	-	-	-	-	✓

Example- WWAN 4G antenna



Technical data	
Application	WWAN external antenna
Scope of delivery	1 x Ext antenna cable 3meter 1 x Monopole/C 2G/3G/4G 2.2dBi SMA/M CFD-200 Black antenna

6.7. External GPS receiver

P/N	Description	DLT-V7310	DLT-V7312/P+	DLT-V8310	DLT-V8312	DLT-V8315	DLT-V7210	DLT-V7212	DLT-V7210 K, KD	DLT-V7212/15 P+	DLT-V6210FL
968AD00353	External GPS receiver	-	-	✓	✓	✓	✓	✓	✓	✓	✓

Example- External GPS receiver



Technical data	
Application	For rough industrial environment and vehicles.
Scope of delivery	1 x External GPS receiver with 1.5 m USB connector 1 x Installation CD

6.8. WWAN GPS Antenna remote

P/N	Description	DLT-V7310	DLT-V7312/P+	DLT-V8310	DLT-V8312	DLT-V8315	DLT-V7210	DLT-V7212	DLT-V7210 K, KD	DLT-V7212/15 P+	DLT-V6210FL
9768ANTN015	WWAN GPS Antenna remote	✓	✓	-	-	-	-	-	-	-	-





Example: WWAN GPS Antenna



Technical data	
Application	For rough industrial environment and vehicles.
Scope of delivery	1 x Antenna GPS Active 5v 38x40 with 5M SMA GA31B 1 x Monopole/C 2G/3G/4G 2.2dBi SMA/M CFD-200 BLK 300

7 KEYBOARD

7.1.Availability Matrix

Availability Matrix Additional Features											
		DLT-V7310	DLT-V7312/P+	DLT-V8310	DLT-V8312	DLT-V8315	DLT-V7210	DLT-V7212	DLT-V7210 K, KD	DLT-V7212/15 P+	DLT-V6210FL
P/N	Description										
DL-KEYB01	Keyboard QWERTZ 65 keys alphanumeric	✓	✓	-	-	-	-	-	-	-	-
DL-KEYB02	Keyboard QWERTY 65 keys alphanumeric	✓	✓	-	-	-	-	-	-	-	-
DL-KEYB03	Keyboard 21 keys numeric	✓	✓	-	-	-	-	-	-	-	-

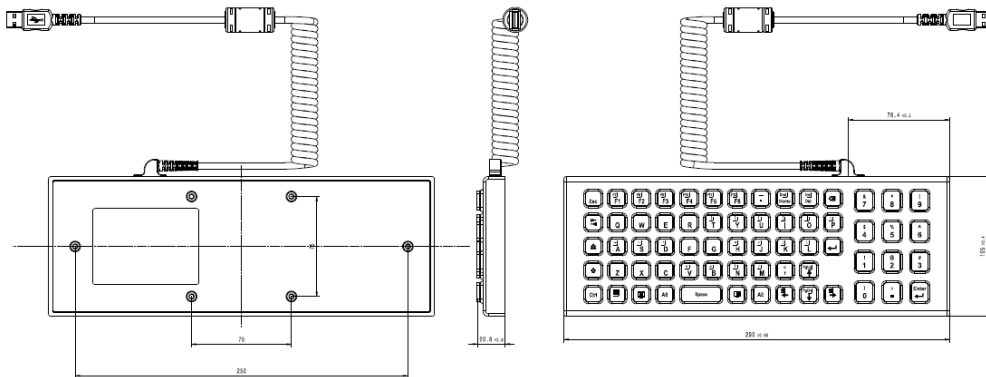
7.2. Keyboard 65 keys alphanumeric

P/N	Description	DLT-V7310	DLT-V7312/P+	DLT-V8310	DLT-V8312	DLT-V8315	DLT-V7210	DLT-V7212	DLT-V7210 K, KD	DLT-V7212/15 P+	DLT-V6210FL
DL-KEYB01	Keyboard QWERTZ 65 keys alphanumeric	✓	✓	-	-	-	-	-	-	-	-
DL-KEYB02	Keyboard QWERTY 65 keys alphanumeric	✓	✓	-	-	-	-	-	-	-	-

Example: Keyboard 65 keys alphanumeric



Technical data	
Application	For rough industrial environment and vehicles
Scope of delivery	1 x USB Keyboard 65 keys alphanumeric, black, IP66, VESA 75



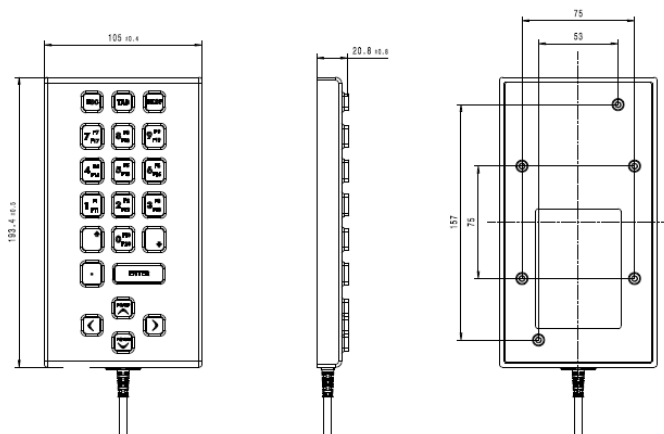
7.3. Keyboard 21 keys numeric

P/N	Description	DLT-V7310	DLT-V7312/P+	DLT-V8310	DLT-V8312	DLT-V8315	DLT-V7210	DLT-V7212	DLT-V7210 K, KD	DLT-V7212/15 P+	DLT-V6210FL
DL-KEYB03	Keyboard 21 keys numeric	✓	✓	-	-	-	-	-	-	-	-

Example: Keyboard 21 keys numeric



Technical data	
Application	For rough industrial environment and vehicles
Scope of delivery	1 x USB Keyboard 21 keys numeric, black, IP66, VESA 75



8 ADDITIONAL FEATURES

8.1. Availability Matrix

Availability Matrix Additional Features											
P/N	Description	DLT-V7310	DLT-V7312/P+	DLT-V8310	DLT-V8312	DLT-V8315	DLT-V7210	DLT-V7212	DLT-V7210 K, KD	DLT-V7212/15 P+	DLT-V6210FL
DLT-SA6100-0000	Digital Smart Motion Sensor - ScreenBlanking	-	-	✓	✓	✓	✓	✓	✓	✓	✓

8.2. Digital Smart Motion Sensor- ScreenBlanking

P/N	Description	DLT-V7310	DLT-V7312/P+	DLT-V8310	DLT-V8312	DLT-V8315	DLT-V7210	DLT-V7212	DLT-V7210 K, KD	DLT-V7212/15 P+	DLT-V6210FL
DLT-SA6100-0000	Digital Smart Motion Sensor - ScreenBlanking	-	-	✓	✓	✓	✓	✓	✓	✓	✓





Example: Digital Smart Motion Sensor



Technical data	
Application	Digital Smart Motion Sensor- ScreenBlanking
Scope of delivery	1 x USB sensor stick

9 POWER SUPPLIES & CORDS

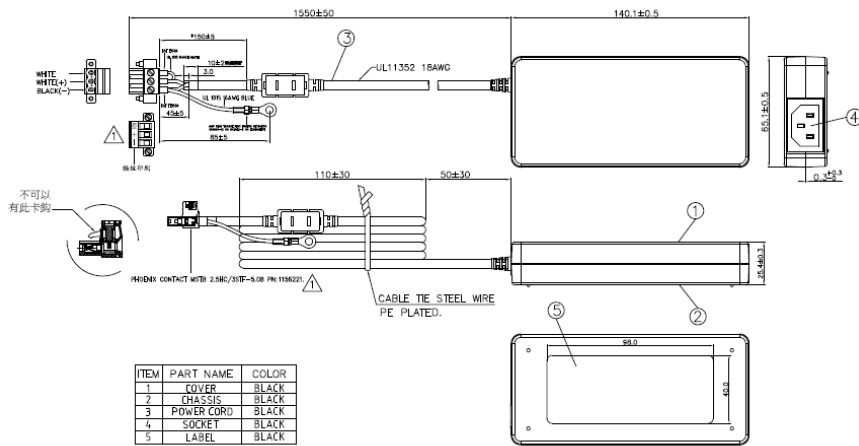
9.1. Availability Matrix

Availability Matrix Power Supplies & Cords												
P/N	Description	DLT-V7310	DLT-V7312/P+	DLT-V8310	DLT-V8312	DLT-V8315 (DC)	DLT-V8315 (AC)	DLT-V7210	DLT-V7212	DLT-V7210 K, KD	DLT-V7212/15 P+	DLT-V6210FL
98R8CHAR000	Power Supply 110/240VAC, 24V output, 90W	✓	✓	✓	✓	✓	-	✓	✓	✓	✓	✓
1702002600	(US)Power Cord UL 3P 10A 125V 183cm	✓	✓	✓	✓	✓	-	✓	✓	✓	✓	✓
170203183C	(EU) Power Cord EU 3P 2.5A 250V 183cm	✓	✓	✓	✓	✓	-	✓	✓	✓	✓	✓
170203180A	(GB)Power Cord BSI 3P 2.5A 250V 183cm	✓	✓	✓	✓	✓	-	✓	✓	✓	✓	✓

9.2. Power Supply 110/240VAC, 24V output, 90W

P/N	Description	DLT-V7310	DLT-V7312/P+	DLT-V8310	DLT-V8312	DLT-V8315 (DC)	DLT-V8315 (AC)	DLT-V7210	DLT-V7212	DLT-V7210 K, KD	DLT-V7212/15 P+	DLT-V6210FL
98R8CHAR000	Power Supply 110/240VAC, 24V output, 90W	✓	✓	✓	✓	✓	-	✓	✓	✓	✓	✓

Example- Power Supply




Technical data	
Application	External Power supply for DC units
Scope of delivery	1 x Power supply with phoenix 3 pin plug

9.3. Power Cords for external adapter

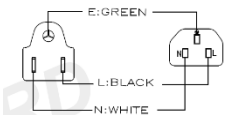
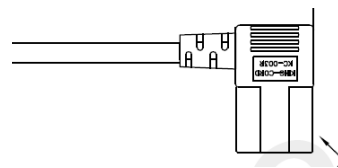
P/N	Description	Plug Type	Connector type	Cable length
1702002600	(US) Power Cord UL 3P 10A 125V 183cm			183 cm
170203183C	(EU) Power Cord EU 3P 2.5A 250V 183cm			183 cm
170203180A	(GB) Power Cord BSI 3P 2.5A 250V 183cm			183 cm

10 AC POWER CABLES

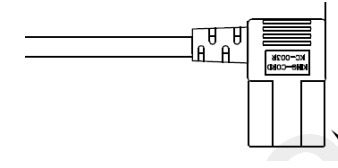
10.1. Availability Matrix

Availability Matrix Power Cables												
P/N	Description	DLT-V7310	DLT-V7312/P+	DLT-V8310	DLT-V8312	DLT-V8315 (DC)	DLT-V8315 (AC)	DLT-V7210	DLT-V7212	DLT-V7210 K, KD	DLT-V7212/15 P+	DLT-V6210FL
1700031645-01	(US) Power Cord UL 3P 10A 125V 300cm	-	-	-	-	-	✓	-	-	-	-	-
96DL-690023	(EU) AC Power cable EU 110/230VAC RA 2.5m ErP	-	-	-	-	-	✓	-	-	-	-	-

10.2.AC Power Cables (for V8315 AC type)





P/N	Description	Plug Type	Connector type	Cable length
1700031645-01	(US) Power Cord UL 3P 10A 125V 300cm			300 cm

10.3.AC Power Cables (110/230VAC RA 2.5m ErP)

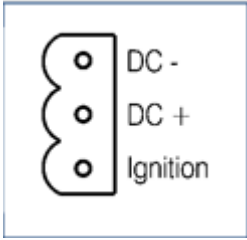
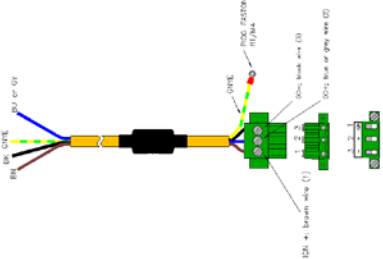
P/N	Description	Plug Type	Connector type	Cable length
96DL-690023	(EU) AC Power cable EU 110/230VAC RA 2.5m ErP			300 cm

11 DC POWER CABLES

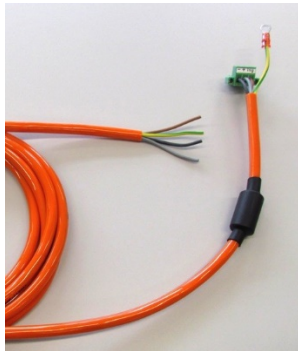
11.1. Availability Matrix

Availability Matrix DC Power Cables												
P/N	Description	DLT-V7310	DLT-V7312/P+	DLT-V8310	DLT-V8312	DLT-V8315 (DC)	DLT-V8315 (AC)	DLT-V7210	DLT-V7212	DLT-V7210 K, KD	DLT-V7212/15 P+	DLT-V6210FL
DL-CCAPW51119910	Power Cable VDC 3m	✓	✓	✓	✓	✓	-	✓	✓	✓	✓	✓
1700033361-01	Power cable with 6pin-F Adapter forklift 250cm-UL	✓	✓	✓	✓	✓	-	✓	✓	✓	✓	✓
1700033360-01	Power cable with 6pin-M Adapter DLT 50cm-UL	✓	✓	✓	✓	✓	-	✓	✓	✓	✓	✓
1700034085-01 For USA only	Power cable with 6pin-M Adapter DLT 250cm + 50cm IGN + DC+ are connected	✓	✓	✓	✓	✓	-	✓	✓	✓	✓	✓

11.2. DC Power Cables

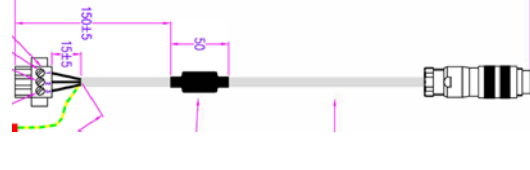


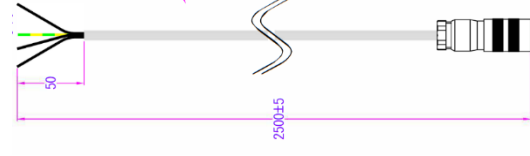
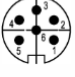

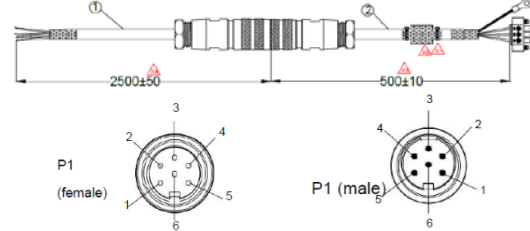
P/N	Description	Plug Type	Connector type	Cable length
DL-CCAPW51119910	Power Cable VDC 3m			300 cm

Example- DC Power Cable




Technical data	
Application	Power cable for direct DC input to DLT-V DC Barebone
Scope of delivery	1 x 3 meter DC Power cable with phoenix 3pin connector

11.3.Quick Connect Cables

P/N	Description	Cable	Plug type	Details																				
1700033360-01	M cable JACK 6P/Plug-in 3P-5.0+G-TEM 50cm		 <p>Pins from solder termination side</p> <ul style="list-style-type: none"> 1 = DC+ (wire no. 2) 2 = NC 3 = DC- (wire no. 3) 4 = NC 5 = PE (GN/YE cable) 6 = IGN (wire no. 1) 	50cm Male quick connect adapter with phoenix 3 pin plug																				
1700033361-01	F cable JACK 6P 250cm		 <p>Pins from solder termination side</p> <ul style="list-style-type: none"> 1 = DC+ (wire no. 2) 2 = NC 3 = DC- (wire no. 3) 4 = NC 5 = PE (GN/YE cable) 6 = IGN (wire no. 1) 	250cm Female quick connect adapter																				
1700034085-01 For USA only	A cable PLUG-IN 3P-5.08+G-TEM/Waterproof 6P(M)/W		<table border="1"> <thead> <tr> <th colspan="2">P1 female</th> <th colspan="2">P1 male</th> </tr> </thead> <tbody> <tr> <td>DC+</td> <td>1 red</td> <td>DC+</td> <td>1 Red</td> </tr> <tr> <td>DC</td> <td>3 black</td> <td>Ign</td> <td>6 white</td> </tr> <tr> <td>GND</td> <td>5 Green</td> <td>DC</td> <td>3 black</td> </tr> <tr> <td>Ign</td> <td>6 Y/W</td> <td>GND</td> <td>5 Y/W</td> </tr> </tbody> </table>	P1 female		P1 male		DC+	1 red	DC+	1 Red	DC	3 black	Ign	6 white	GND	5 Green	DC	3 black	Ign	6 Y/W	GND	5 Y/W	50cm Male quick connect adapter with phoenix 3 pin plug 250cm Female quick connect adapter
P1 female		P1 male																						
DC+	1 red	DC+	1 Red																					
DC	3 black	Ign	6 white																					
GND	5 Green	DC	3 black																					
Ign	6 Y/W	GND	5 Y/W																					

12 USB RECOVERY STICK

12.1. Availability Matrix

Availability Matrix USB Recovery Stick											
		DLT-V7310	DLT-V7312/P+	DLT-V8310	DLT-V8312	DLT-V8315	DLT-V7210	DLT-V7212	DLT-V7210 K, KD	DLT-V7212/15 P+	DLT-V6210FL
9768STRG003	USB recovery stick for DLT-Vxx legacy	-	-	✓	✓	✓	✓	✓	✓	✓	✓
9768STRG004	USB recovery stick for DLT-Vxx UEFI	✓	✓	-	-	-	-	-	-	-	-

12.2. USB recovery stick for DLT-Vxx legacy

P/N	Description	DLT-V7310	DLT-V7312/P+	DLT-V8310	DLT-V8312	DLT-V8315	DLT-V7210	DLT-V7212	DLT-V7210 K, KD	DLT-V7212/15P+	DLT-V6210FL
9768STRG003	USB recovery stick for DLT-Vxx legacy	-	-	✓	✓	✓	✓	✓	✓	✓	✓

Example: USB Recovery Stick



Technical data	
Application	USB recovery stick for ADLOG products
Scope of delivery	1 x Img WinPE Ghost Restore legacy v1.00 1 x Symantec Ghost Solution Suite v3.2 Lizenz 1 x KINGSTON CUSTOM 64GB USB

12.3. USB recovery stick for DLT-Vxx UEFI

P/N	Description	DLT-V7310	DLT-V7312/P+	DLT-V8310	DLT-V8312	DLT-V8315	DLT-V7210	DLT-V7212	DLT-V7210 K, KD	DLT-V7212/15P+	DLT-V6210FL
9768STRG004	USB recovery stick for DLT-Vxx UEFI	✓	✓	-	-	-	-	-	-	-	-

Example: USB Recovery Stick



Technical data	
Application	USB recovery stick for ADLOG products
Scope of delivery	1 x Img WinPE Ghost Restore UEFI v1.00 DLT-V73 1 x Symantec Ghost Solution Suite v3.2 Lizenz 1 x KINGSTON CUSTOM 64GB USB

12 COPYRIGHT & DISCLAIMER

Accessory Guide completed on August 05, 2023

Accessory Guide version 1.07

This document is copyrighted 2023 by Advantech Co., Ltd. All rights are reserved.

This document is intended for reference purposes only. All product specifications are subject to change without notice. Advantech Co., Ltd. reserves the right to make improvements in this document in the products described in this document at any time without notice. No part of this document may be reproduced in any form or by any means, electronic, photocopying, recording, translating, transmitting or otherwise, without prior written permission of Advantech Co., Ltd. Information provided in this document is intended to be accurate and reliable. However, Advantech Co., Ltd. assumes no responsibility for its use, nor for any infringements of the rights of third parties, which may result from its use.

Advantech Co., Ltd. assumes no liability for technical inaccuracies, typographic errors or faults in this documentation.

Advantech Co., Ltd. also assumes no liability for damages caused directly or indirectly by the delivery, performance or usage of this material.

The software and hardware designations as well as the brand names used in this documentation are in most cases also registered trademarks and are subject to the international law (trademark, brand and patent-protection laws). All product names or trademarks are properties of their respective owners.

RAM® and RAM Mount™ are both trademarks of National Products Inc., 1205 S. Orr Street, Seattle, WA 98108.